

# TIP-ON BLUMOTION for LEGRABOX

Sink pull-out

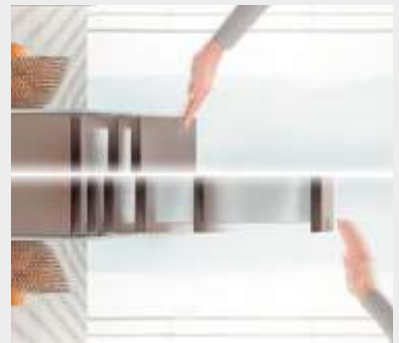
[www.blum.com](http://www.blum.com)



## Memo

i

Ease of use



One-touch opening, feather-light glide, silent and effortless closing. TIP-ON BLUMOTION is a marriage of perfect motion and enhanced user convenience. The motion is assisted 100% mechanically.



TIP-ON BLUMOTION can be implemented with a small front gap of 2.5 mm.

### TIP-ON BLUMOTION in sink pull-out

The sink pull-out uses every inch of storage space available and gives you easy access to the contents. With TIP-ON BLUMOTION, it is now mechanically possible to open LEGRABOX sink pull-outs with just a light touch and close them silently and effortlessly.

### Don't waste an inch

The U-shaped sink pull-out puts the space around the sink to best possible use. It's ideal for clearing away sponges, washing-up liquid and tabs. It keeps worktops free and ensures that cleaning products are easily accessible. Also suitable for pull-outs with a drain cut-out in the bathroom.



Learn more about  
TIP-ON BLUMOTION  
for LEGRABOX at:

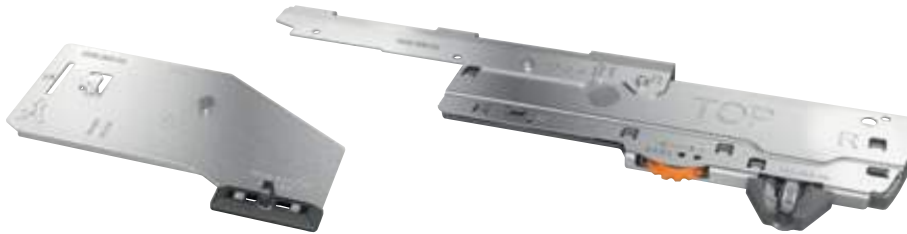
> [www.blum.com/tob\\_lbz](http://www.blum.com/tob_lbz)

# TIP-ON BLUMOTION for LEGRABOX



Exceptional ease of use with the sink pull-out

Set containing TIP-ON BLUMOTION unit and TIP-ON BLUMOTION latch



## Order specification

	<b>1 TIP-ON BLUMOTION set for sink pull-out*</b>			<b>Weight (kg)**</b>			
	NL (mm)	Unit		< 10 kg	20 kg	30 kg	40 kg
				≤ 20			
	350–600	L1***	T60L9340				
	L3	T60L9540					
<b>Consisting of:</b> 2x TIP-ON BLUMOTION unit 2x TIP-ON BLUMOTION latch 2x synchronisation adapter LW ≥ 314 mm				* Possible for NL ≥ 350 mm ** Recommended weight ranges (total weight of pull-out) for optimum opening and closing function *** Can only be combined with 40 kg cabinet profile (750.)			

Make the right calculations for your TIP-ON BLUMOTION unit using the product configurator: [www.blum.com/configurator](http://www.blum.com/configurator)

	<b>2 TIP-ON BLUMOTION synchronisation linkage</b>			<b>T60.1125W</b>
	Possible for LW ≥ 314 mm			
	Suitable for LW up to 1370 mm			

## Planning

**Space requirements in the cabinet – drawer/high fronted pull-out**

\* + 1 mm for assembly of the cabinet profile on the horizontal cabinet side  
 \*\* incl. 2 mm tilt adjustment

**Space requirements in the cabinet – inner drawer**

\* + 1 mm for assembly of the cabinet profile on the horizontal cabinet side

**Latch set (Z17.0M07):**  
 Cannot be used in combination with TIP-ON BLUMOTION

Synchronisation		Distance between the synchronisation linkage and the front		
 For LW ≥ 314 mm		NL (mm)	X for 750.xxx1S	X for 750.xxx1M
		350	65 mm	80 mm
400	85 mm	100 mm		
450	65 mm	80 mm		
500	65 mm	80 mm		
550	65 mm	80 mm		
600	65 mm	80 mm		

LW Internal cabinet width  
 NL Nominal length