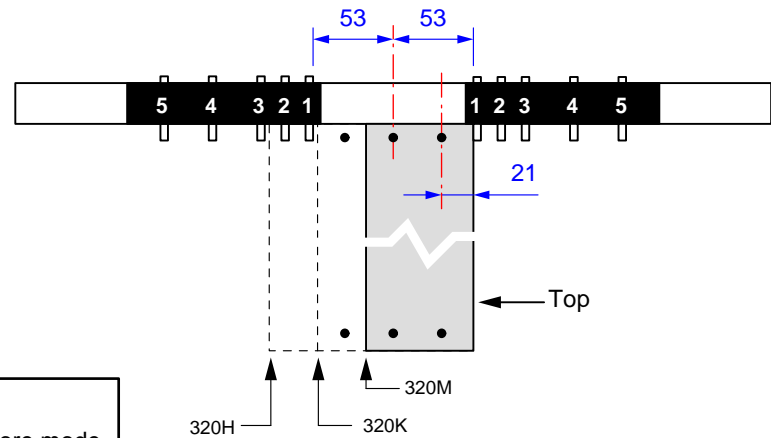
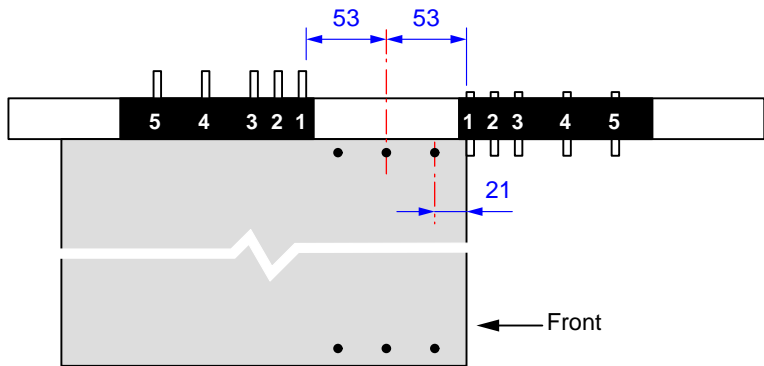


**Standard Drawer Bottom**

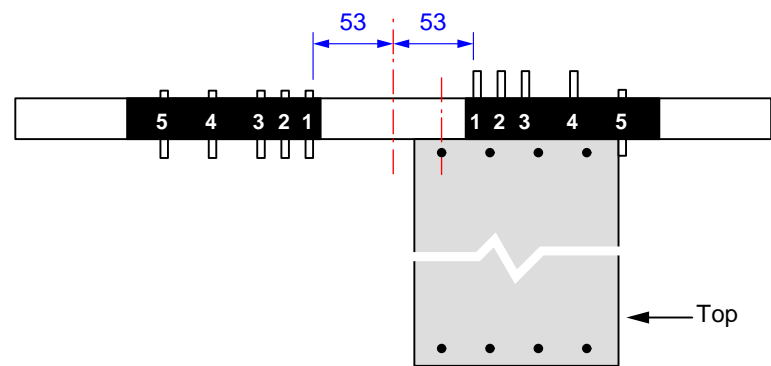


**Drawer Backs**

For all drilling:  
 - MINIPRESS / DRILL in line bore mode  
 - (3) 5mm bits installed  
 - Fence depth set at 9mm  
 - First pin on MINISTICK set at 53mm



**Interior Drawer Bottom**



**320H Drawer Back  
2nd drilling position**

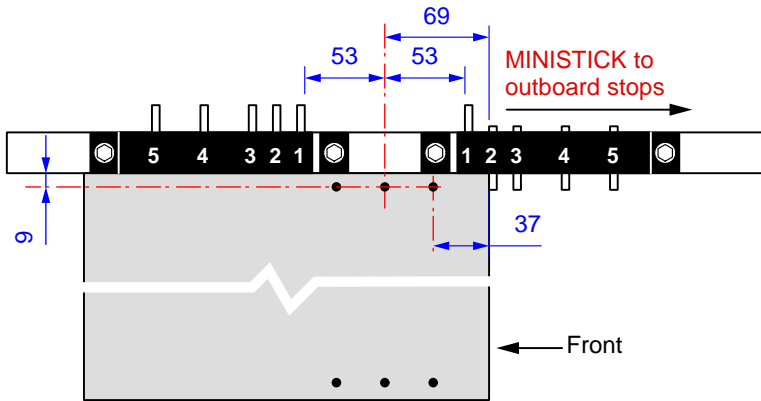
Drilling drawer bottoms and backs for METABOX C15  
**Setup for when no Gallery Rails are used**

Dimension in millimeters, inch equivalents as noted  
 Subject to technical modifications without notice.

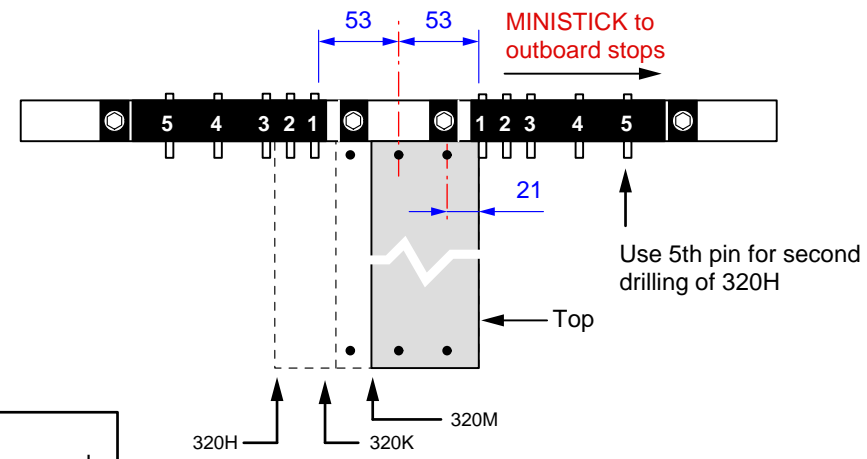


Blum, Inc  
 Stanley, NC 28164

Description	Date	Author	Index	Scale	Drawing No.	Page No.
MZS.0040 MINISTICK applications	4/7/04			5:1	BUS0088	1

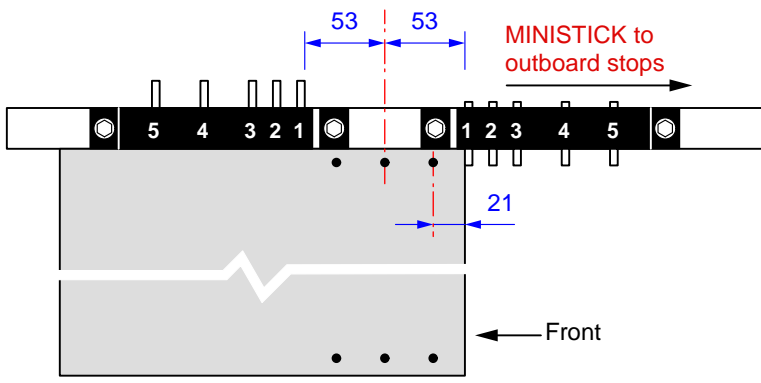


**Standard Drawer Bottom**

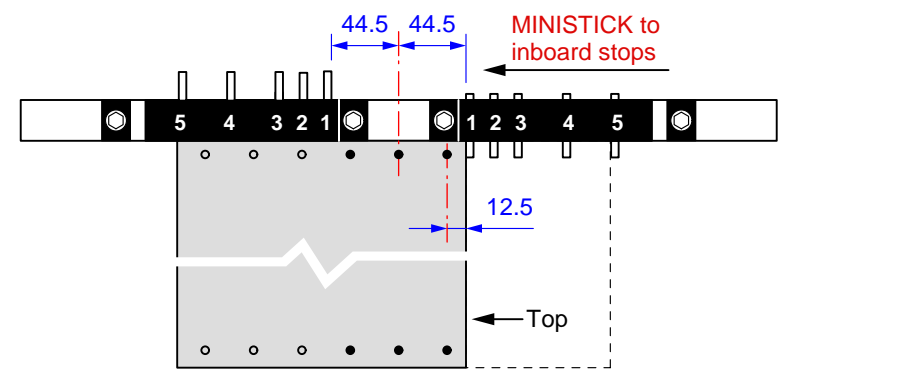


**Standard Drawer Backs**

For all drilling:  
 - MINIPRESS / DRILL in line bore mode  
 - (3) 5mm bits installed  
 - Fence depth set at 9mm  
 - Use MINISTICK stops to alternate between bottom and back drilling



**Interior Drawer Bottom**



**Gallery Drawer Back**

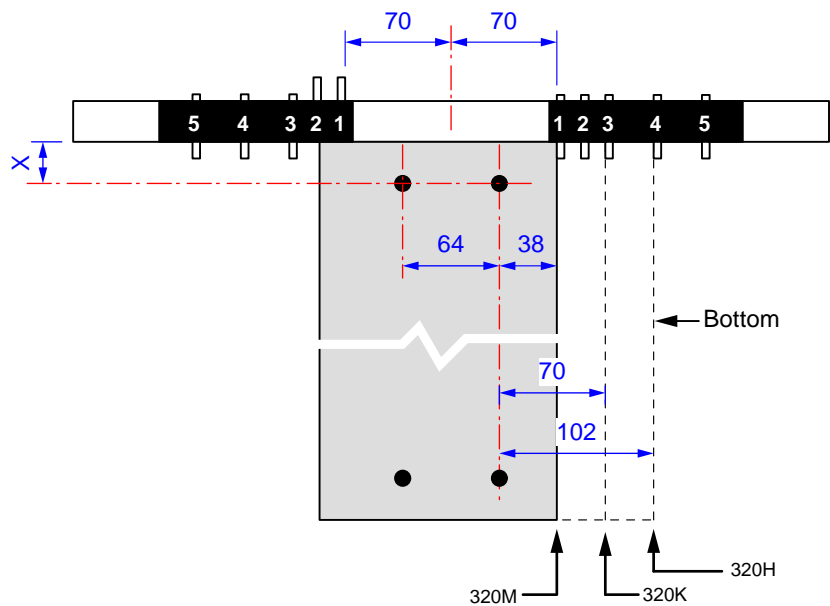
Drilling drawer bottoms and backs for METABOX C15  
**Setup for when Gallery Rails are used**

Dimension in millimeters, inch equivalents as noted  
 Subject to technical modifications without notice.

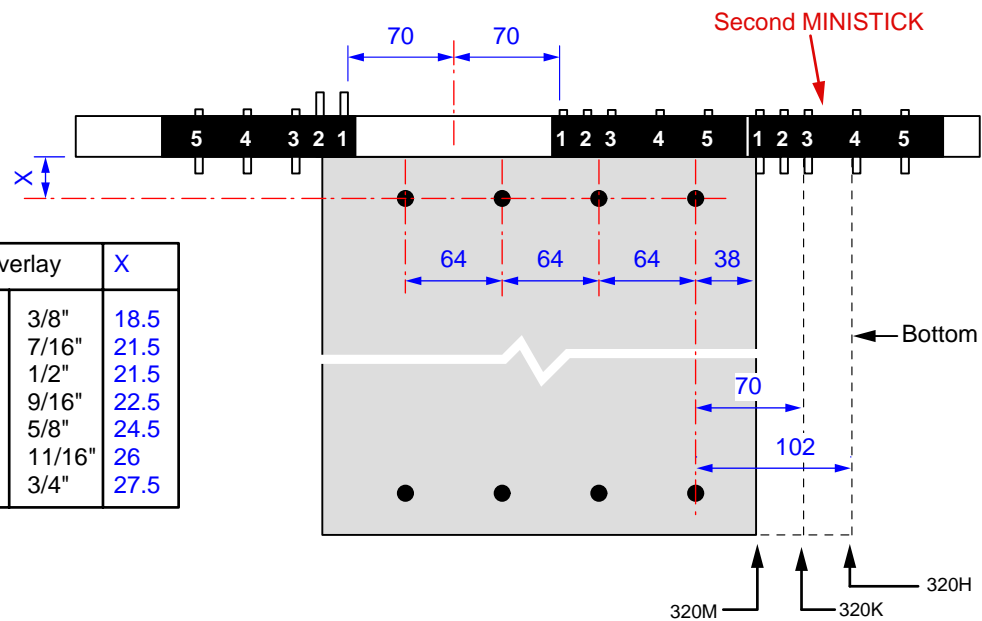


Blum, Inc  
 Stanley, NC 28164

Description	Date	Author	Index	Scale	Drawing No.	Page No.
MZS.0040 MINISTICK applications	4/7/04		02	5:1	BUS0088	2



**Standard Drawer Fronts**  
**Process 32**



**Drawer Fronts with Galleries**  
**Process 32**

For overlay		X
10	3/8"	18.5
11	7/16"	21.5
13	1/2"	21.5
14	9/16"	22.5
16	5/8"	24.5
17.5	11/16"	26
19	3/4"	27.5

For all drilling:  
 - MINIPRESS / DRILL in line bore mode  
 - (2) 10mm bits installed  
 - Fence setting (X) variable according to drawer front overlay

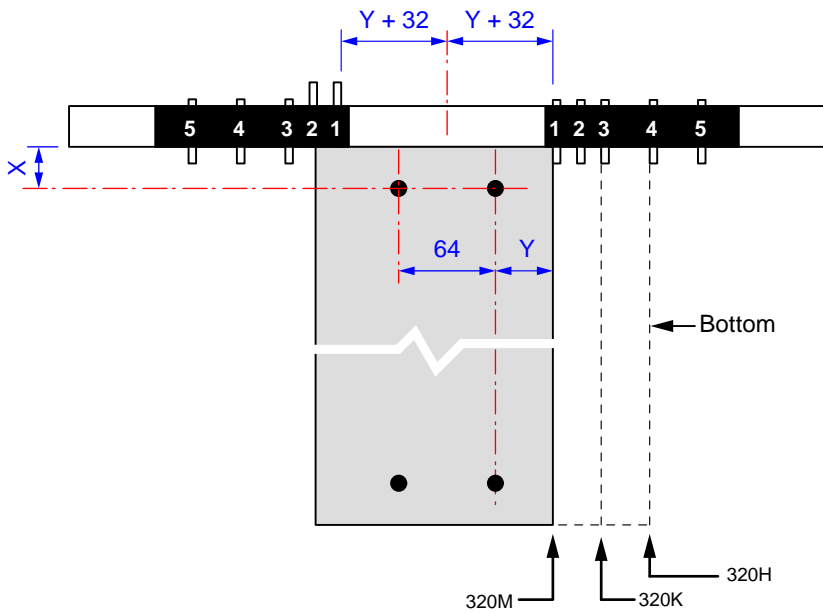
**Drilling drawer fronts**

Dimension in millimeters, inch equivalents as noted  
 Subject to technical modifications without notice.

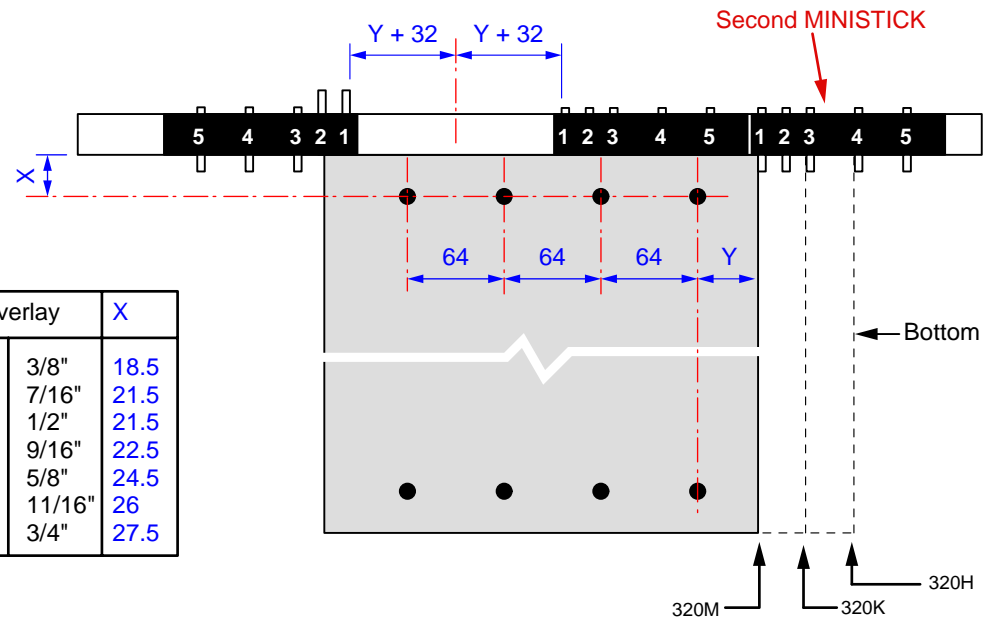


Blum, Inc  
 Stanley, NC 28164

Description	Date	Author	Index	Scale	Drawing No.	Page No.
MZS.0040 MINISTICK applications	4/7/04		00	5:1	BUS0088	3



**Standard Drawer Fronts  
DynaPlan PRO**



**Drawer Fronts with Galleries  
DynaPlan PRO**

For overlay		X
10	3/8"	18.5
11	7/16"	21.5
13	1/2"	21.5
14	9/16"	22.5
16	5/8"	24.5
17.5	11/16"	26
19	3/4"	27.5

For all drilling:  
 - MINIPRESS / DRILL in line bore mode  
 - (2) 10mm bits installed  
 - Fence setting (X) variable according to drawer front side overlay  
 - MINISTICK position (Y) variable according to drawer front bottom overlay

**Drilling drawer fronts**

Dimension in millimeters, inch equivalents as noted  
 Subject to technical modifications without notice.



Blum, Inc  
 Stanley, NC 28164

Description	Date	Author	Index	Scale	Drawing No.	Page No.
MZS.0040 MINISTICK applications	4/7/04		00	5:1	BUS0088	4