

KIT INSTRUCTIONS - H002

CLIP top BLUMOTION 110° (soft close) hinge



Scan the QR code for instruction sheets, videos and other helpful resources.

Kit contains

2ct



CLIP top BLUMOTION 110° (soft close) hinge

2ct



CLIP mounting plate

8ct*



#6 x 5/8" Phillips wood screws

WARNING: CHOKING HAZARD — Small parts. Not for children under 3 years.

Tools (not included)



Cordless drill (Required)



Ø35mm drill bit (Required)



#2 Phillips head bit (Required with drill)



1/8" drill bit (For pre-drilling)



#2 Phillips Screwdriver (Required)



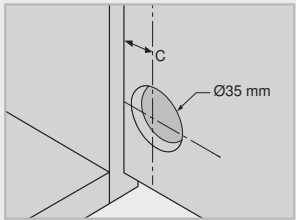
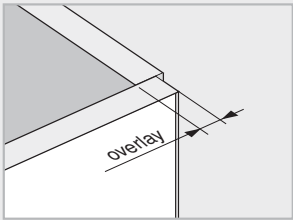
#2 POZI Driver (Recommended for adjustments)

NOTE: Door thickness ranges from **16 mm (5/8") to 26 mm (1")**
For frameless cabinet applications

1. Determine desired overlay for hinge side of the door

Choose your desired overlay (how much the door will cover the side panel). Then, use the table to the right to find your hinge cup centerpoint (C). Your centerpoint will be the same for all hinges on the door.

Overlay	Centerpoint
14 mm (9/16")	20.5 mm (13/16")
15 mm (19/32")	21.5 mm (27/32")
16 mm (5/8")	22.5 mm (7/8")
17 mm (21/32")	23.5 mm (15/16")
18 mm (23/32")	24.5 mm (31/32")

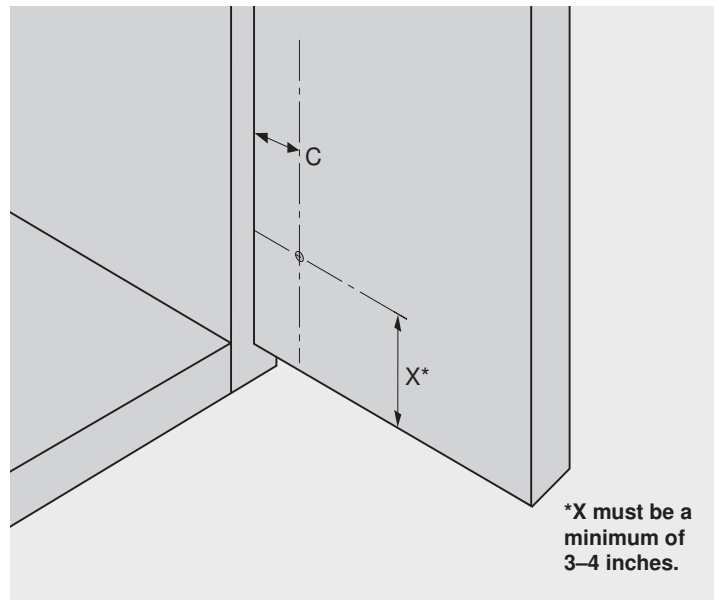


*May include extra screws. Refer to instructions for exact quantity.

2. Measure hinge cup placement

Choose desired placement for hinge from the bottom of your door to the hinge cup centerpoint (X).

NOTE: For maximum stability, the distance between the top and bottom hinges must be greater than the width of the door.

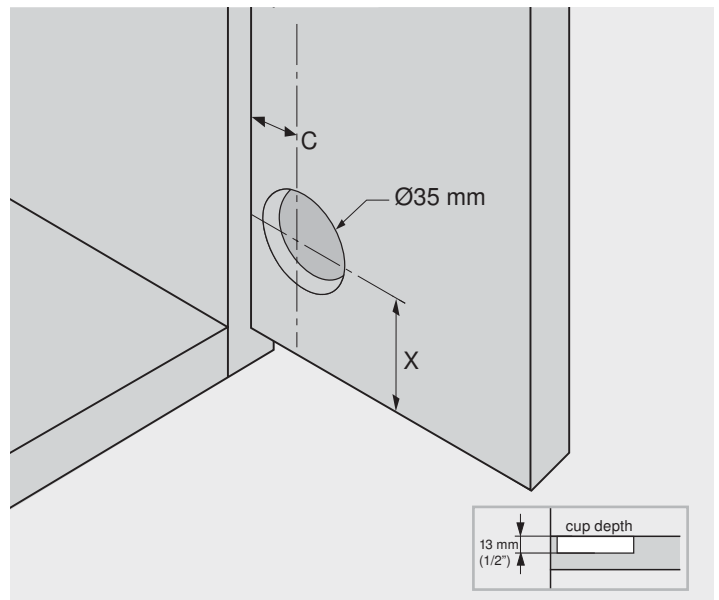


3. Drill cup hole

Use your 35 mm drill bit to drill your hinge cup hole to a depth of 13 mm (1/2").

Repeat steps 2 and 3 for the top of the door.

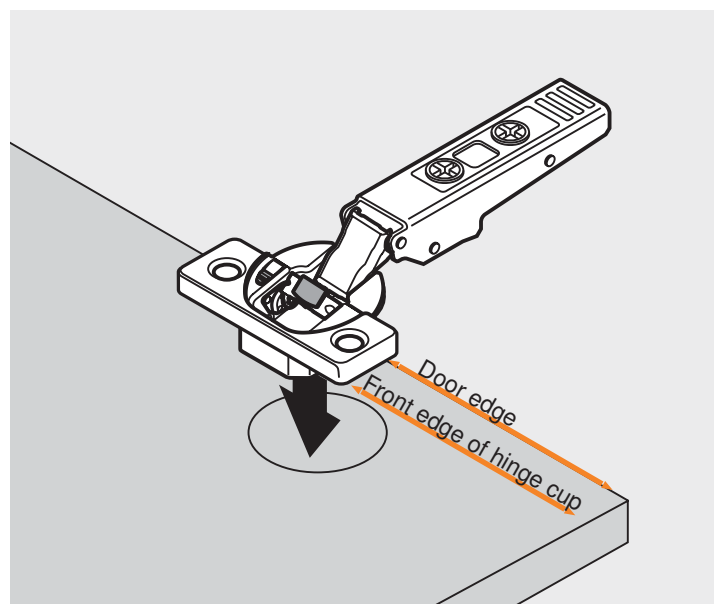
Tool: Use Ø35mm drill bit



4. Place hinge cup into drilled hole

Ensure the front edge of the hinge is parallel with the door edge.

NOTE: To ensure accurate alignment of the hinge cup to the door edge, use a square edge tool.



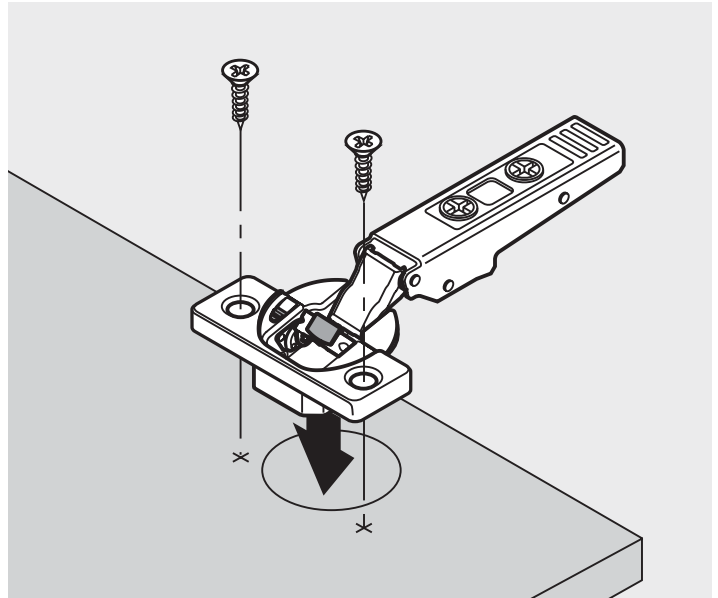
5. Attach hinge cup to door

Pre-drill two 3 mm (1/8") holes to a depth less than 5/8".

Using included #6 x 5/8" wood screws (2ct), attach the hinge cup to your door.

Repeat steps 4 and 5 for the top of the door.

Tools: Use 1/8" drill bit (pre-drilling)
#2 Phillips head bit



6. Attach mounting plate to cabinet

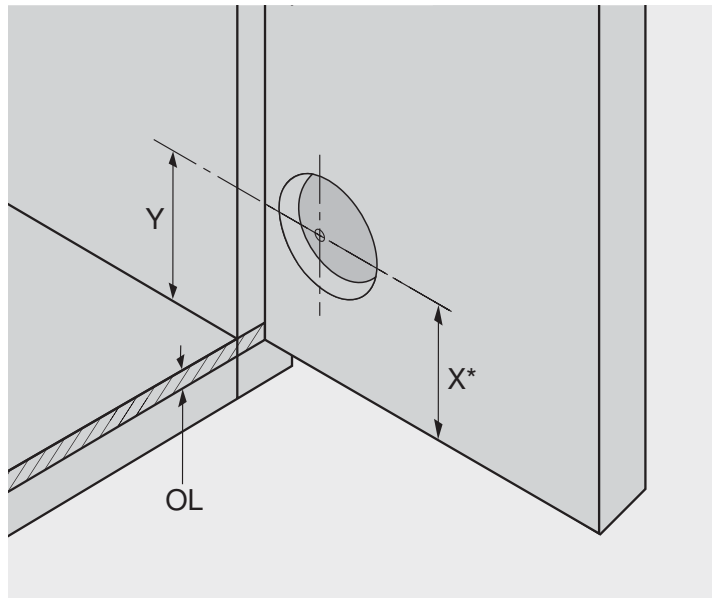
6a.

If pre-drilling, determine your mounting plate centerline (Y) by doing the following:

$$Y = X - OL$$

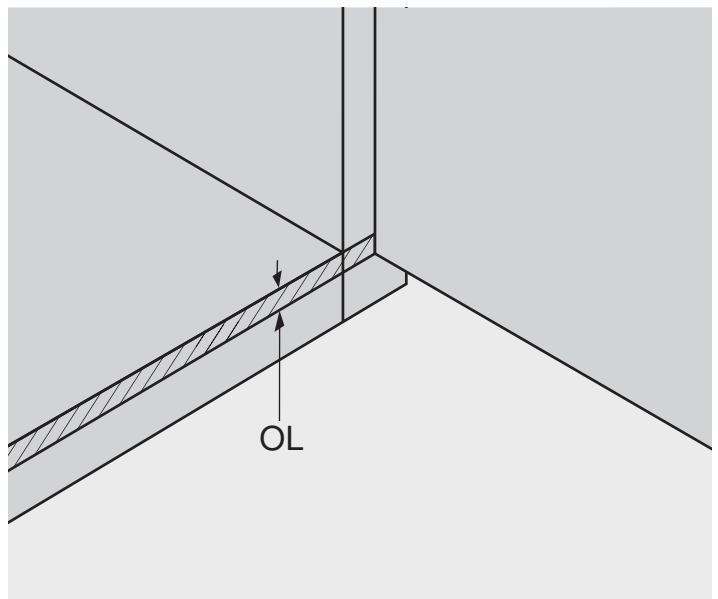
Mounting plate centerline Hinge cup centerpoint from bottom of door Bottom Overlay

Refer to Step 2 for (X).



6b.

Determine your bottom overlay (OL): Measure the distance from the bottom of the cabinet opening to the bottom of the door.



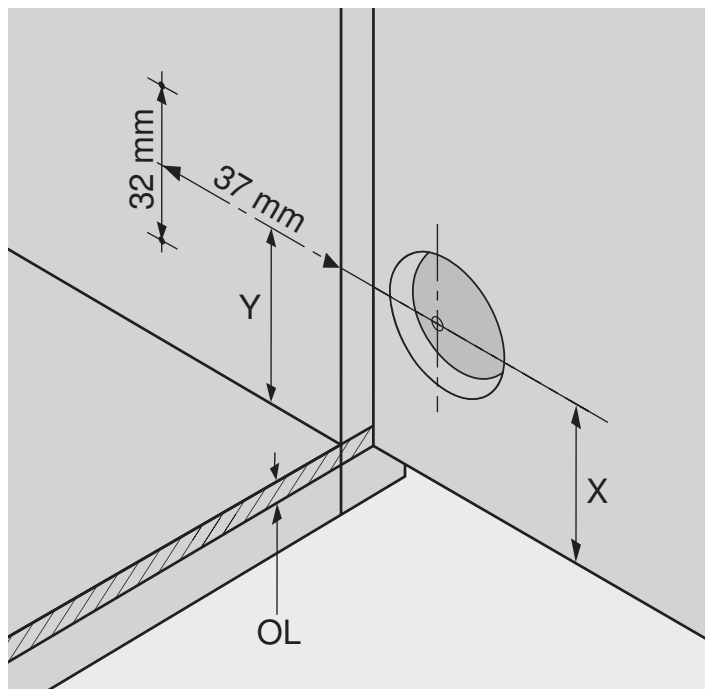
6c.

Determine your mounting plate centerline (Y) and pre-drill locations:

Take (X) and subtract (OL) to get your mounting plate centerline (Y).

Measure 37 mm (1-7/16") from the front edge of the cabinet opening to locate the horizontal position.

NOTE: For reference, the distance between the mounting plate screw holes is 32 mm (1-1/4"). This will help guide your measurements in the next step.

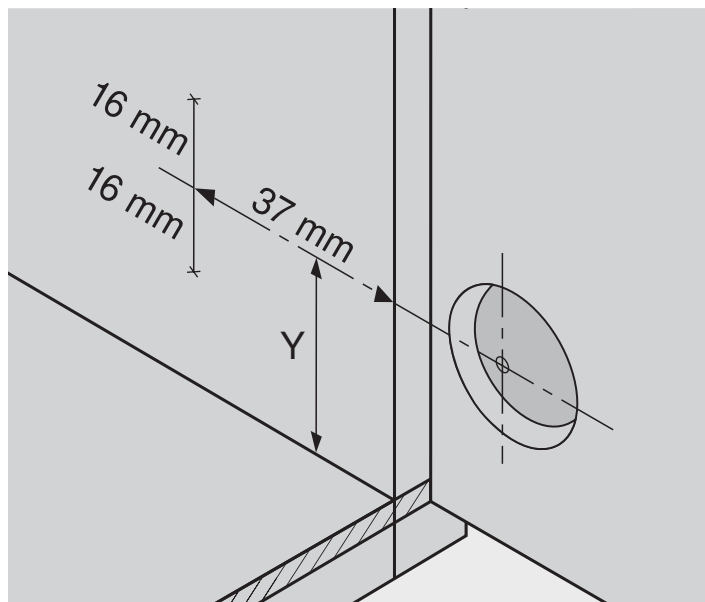


6d.

Measure 16 mm (5/8") below the centerline and 16 mm (5/8") above the centerline to mark your two mounting plate pre-drill locations.

Then, pre-drill two 3 mm (1/8") holes to a depth less than 5/8".

Tool: Use 1/8" drill bit

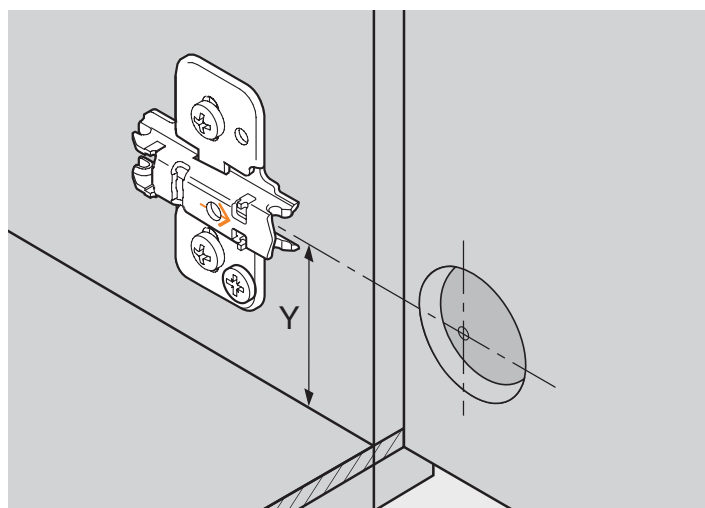


6e.

Attach mounting plate to the side of the cabinet using included #6 x 5/8" wood screws (2ct).

Tools: Use #2 Phillips head bit

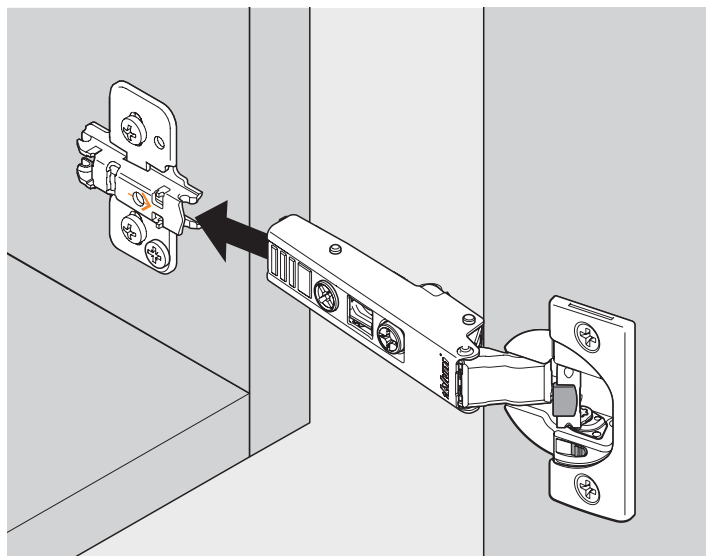
NOTE: Ensure plate is mounted in the correct direction, with the arrow on the top of the plate pointing towards the cabinet opening.



- 6f.** Repeat steps 6a to 6e for the top of the door.

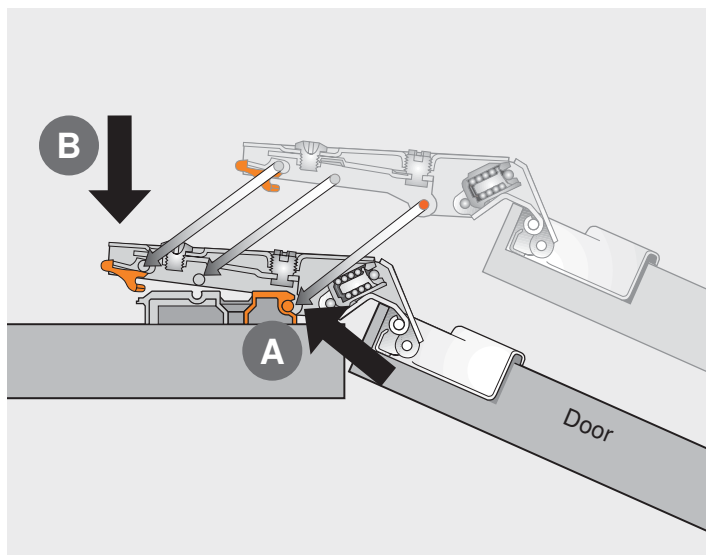
7. Clip hinge onto mounting plate

- 7a.** Align hinge arm with the center of the mounting plate.



- 7b.** Ensure contact between the hinge arm and mounting plate at point (A). Then, push hinge arm firmly onto the mounting plate until it securely clips into place (B).

Repeat for other hinges until door is completely attached.

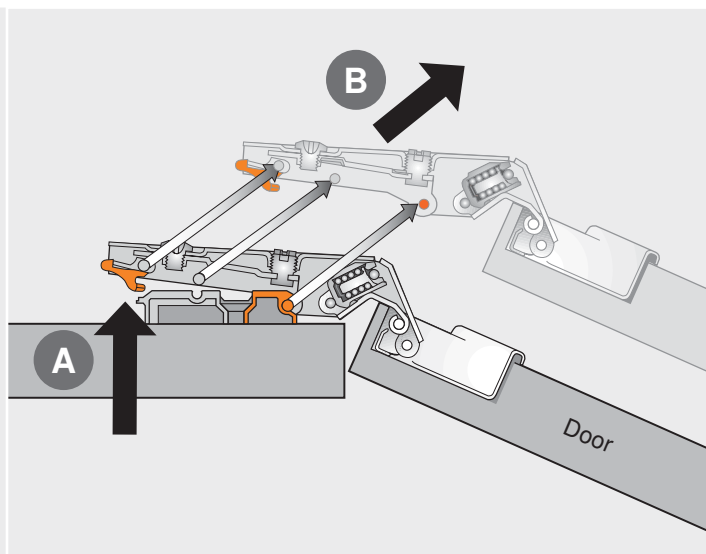


If needed: Unclip hinge from mounting plate

To unclip or remove the hinge from the mounting plate, first fully open the door.

Pull the release lever (A), then pull the hinge away from the mounting plate (B).

For door removal, repeat for all hinges on door.



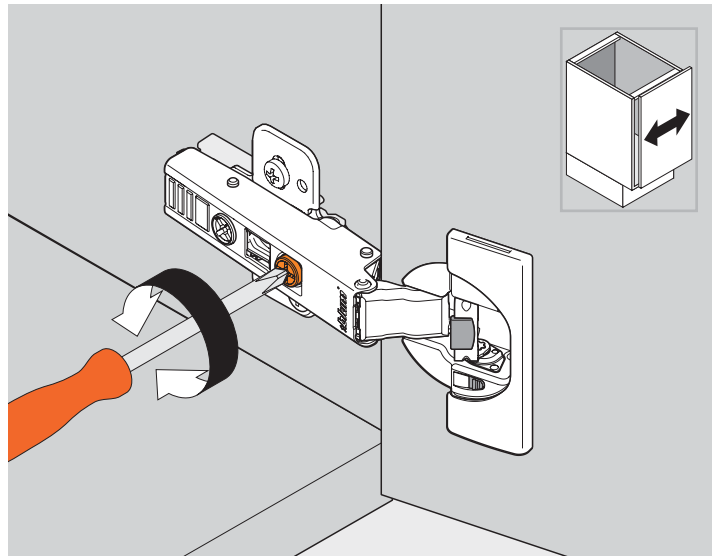
8. Make adjustments

8a.

Side adjustment: Rotate the front cam screw to increase or decrease door side overlay.

Tool: Use #2 Phillips or #2 POZI driver

NOTE: Range = ± 2 mm ($3/32$ ")

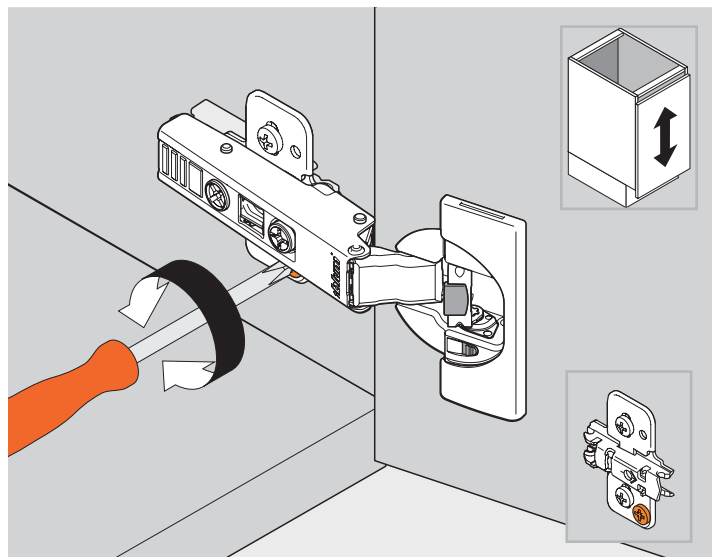


8b.

Height adjustment: Rotate cam screw on mounting plate to adjust door position up and down.

Tool: Use #2 Phillips or #2 POZI driver

NOTE: Range = ± 2 mm ($13/32$ ")

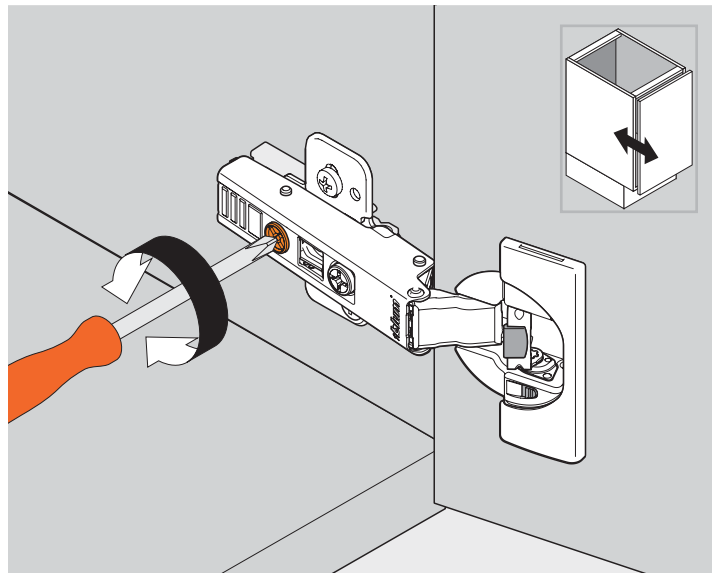


8c.

Depth adjustment: Rotate the rear cam screw to increase or decrease door gap.

Tool: Use #2 Phillips or #2 POZI driver

NOTE: Range = +3 mm, -2 mm
($+1/8$ " , $-3/32$ ")



9. Activate/Deactivate BLUMOTION (soft close)

BLUMOTION (soft close) hinges come in the activated position (A).

To deactivate BLUMOTION (soft close), slide the switch toward the hinge arm (B).

Door must be closed once for the deactivation to be complete. To reactivate, move switch back to the original position.

