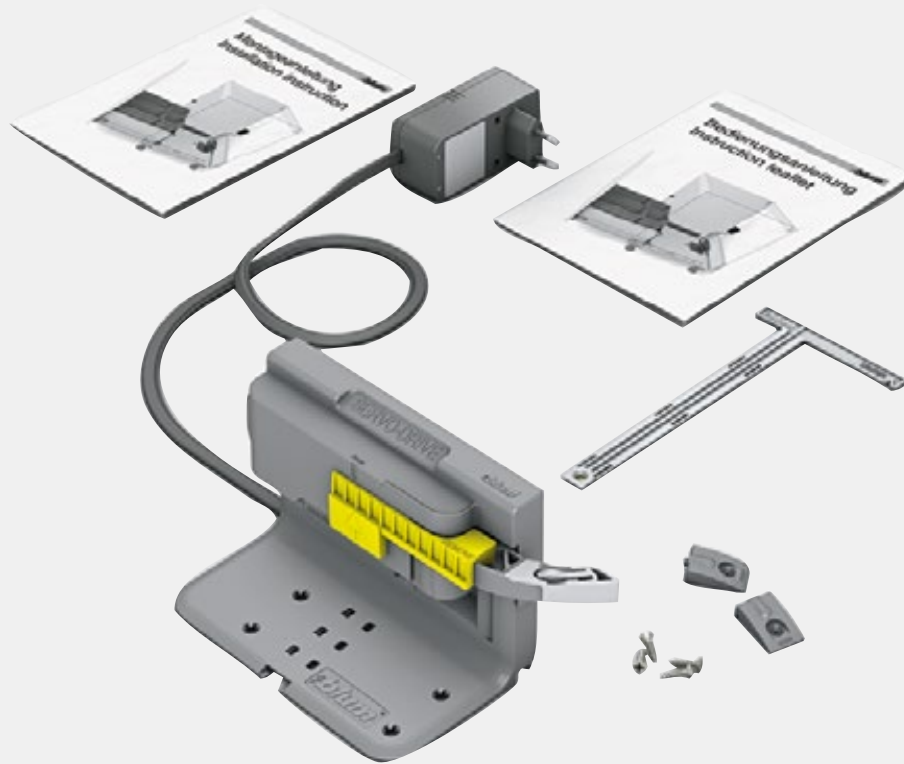


SERVO-DRIVE

by Blum

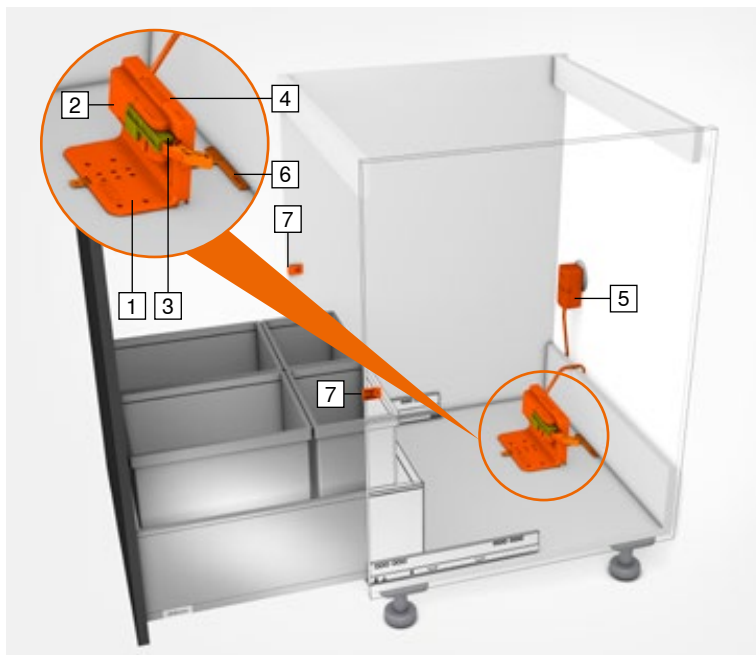


You will find information on SERVO-DRIVE in the Blum catalogue:

www.blum.com/FL-149

SERVO-DRIVE uno

for bottom mount waste bin solutions



i

- 1 Attachment bracket
- 2 Drive unit
- 3 Transport protection
- 4 Protection against dripping water
- 5 SERVO-DRIVE plug-in power supply unit
- 6 Assembly device
- 7 Blum distance bumper

The ideal addition to the waste bin pull-out
SERVO-DRIVE uno provides easy opening for bottom mount waste bin solutions. The pre-mounted individual set can be installed very easily with no additional measuring or drilling required. Also ideal for retrofitting.

SERVO-DRIVE uno

Easy assembly

SERVO-DRIVE uno can be installed quickly and easily.



1. Install Blum spacing bumpers



2. Position assembly device on the cabinet base



3. Slide on SERVO-DRIVE unit



4. Insert and close pull-out – this automatically sets the correct depth position



5. Screw on SERVO-DRIVE unit, remove transport protection

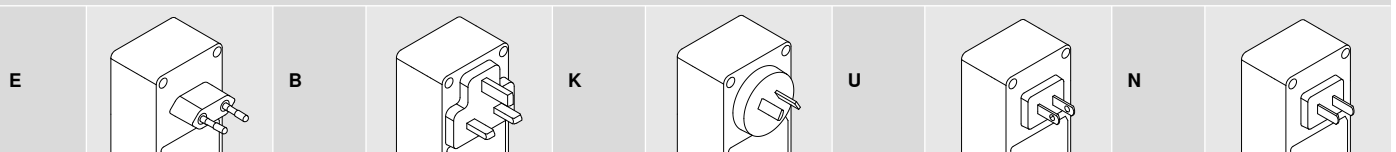


6. Connect SERVO-DRIVE uno to power outlet

Order specification

SERVO-DRIVE uno set						
	Network adapter	Language package		Network adapter	Language package	
	E	A	Z10UB00EA	B	A	Z10UB00BA
	E	B	Z10UB00EB	B	I	Z10UB00BI
	E	C	Z10UB00EC	K	I	Z10UB00KI
	E	D	Z10UB00ED	N	H	Z10UB00NH
	E	E	Z10UB00EE	U	G	Z10UB00UG
	E	F	Z10UB00EF	U	J	Z10UB00UJ

Network adapter



See the Information chapter of the Blum catalogue for a detailed market list.

Language package

A	DE, EN, FR, IT, NL	D	EN, ES, FR, IT, PT	G	EN, ES, FR	J	JA
B	DA, EN, FI, NO, SV	E	CS, HU, PL, SK	H	EN, ZH, KO		
C	EL, EN, HR, SL, SR, TR	F	BG, ET, LT, LV, RO, RU, UK	I	EN		