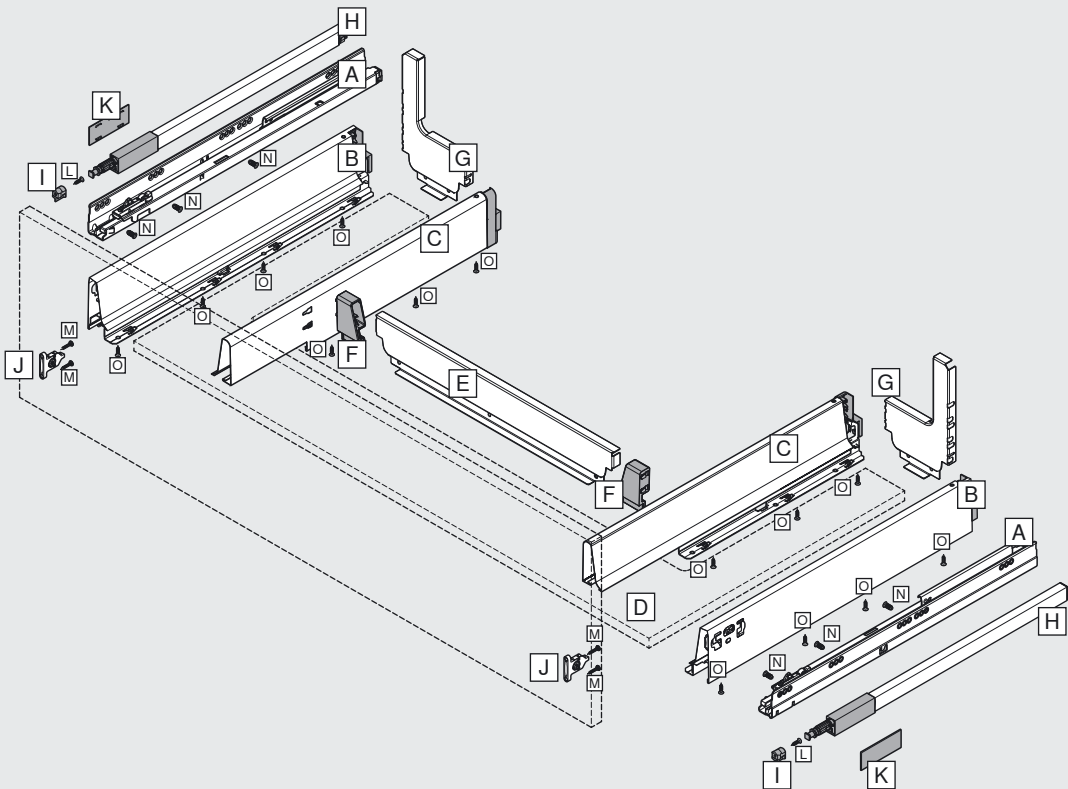
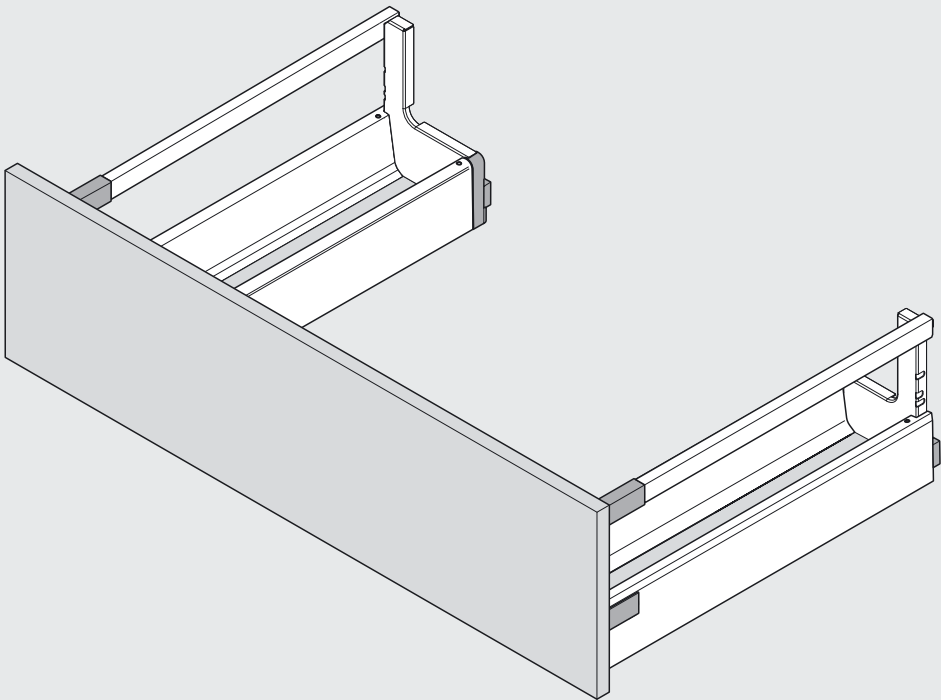






TANDEMBOX antaro

Spülenauszug | Sink pull-out | Cacerolero fregadero

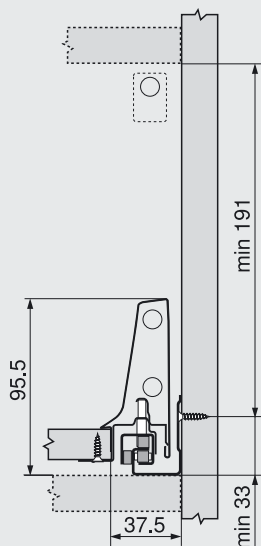


A	B	C	D	E	F	G	H	I	J	K	L	M	N	O
2 x	2 x	2 x	1 x	1 x	2 x	2 x	2 x	2 x	2 x	2 x	2 x	4 x	6 x	14 x
														

Planung | Planning | Planificación

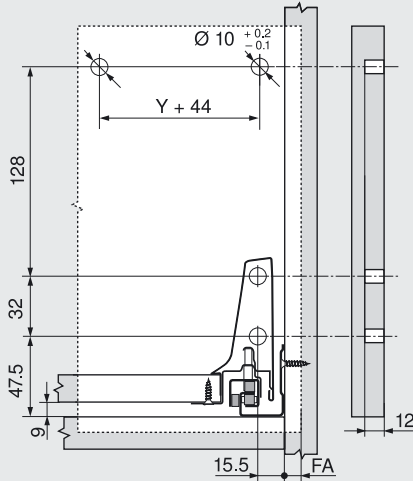
Platzbedarf im Korpus |
space requirements in the cabinet |
espacio ocupado

Höhe D | height D | altura D



Einbaumaße Front für Schraubmontage |
Installation dimensions for screw-on front |
Cotas de montaje frente versión para atornillar

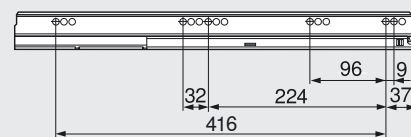
Höhe D | height D | altura D



FA
Frontaufschlag | Front overlay | Recubrimiento
del frente

Befestigung der Korpusschienen |
Cabinet profile screw positions |
Fijación de las guías al cuerpo de mueble

NL 500 mm



Lichte Korpustiefe LT min. =
Nennlänge NL + 3 mm

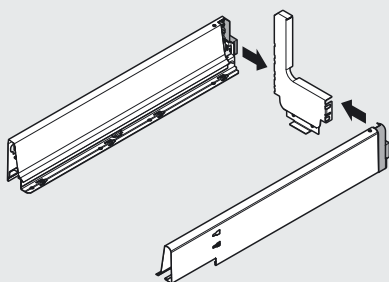
Internal cabinet depth LT min. =
nominal length NL + 3 mm

Prof. interior cuerpo del mueble LT mín. =
largo nominal NL + 3 mm

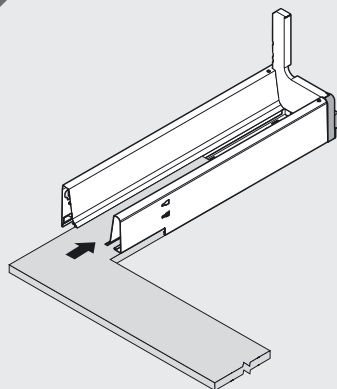
NL
Nennlänge | Nominal length | Largo nominal

Montage | Assembly | Montaje

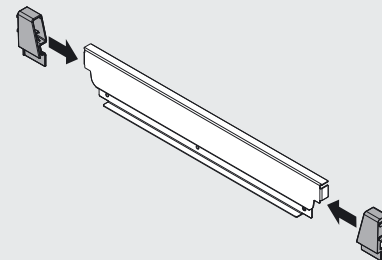
1



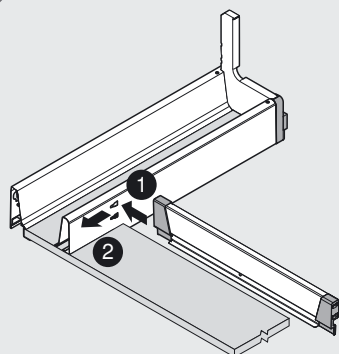
2



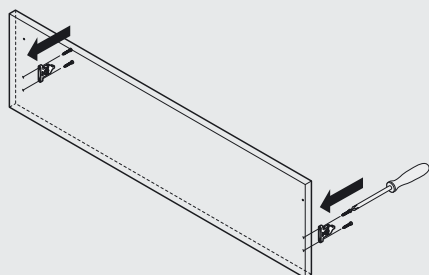
3



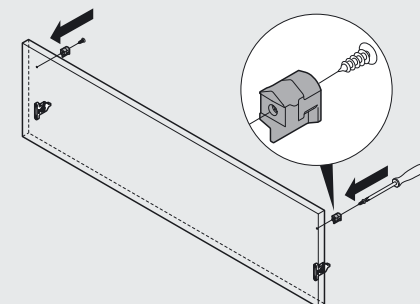
4

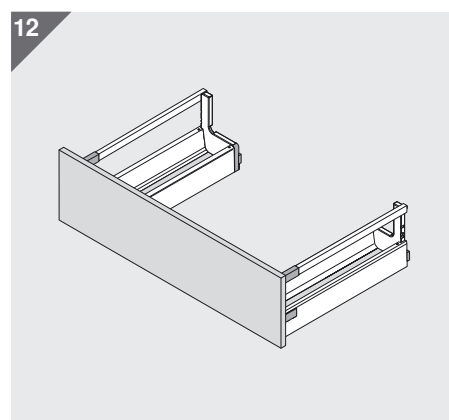
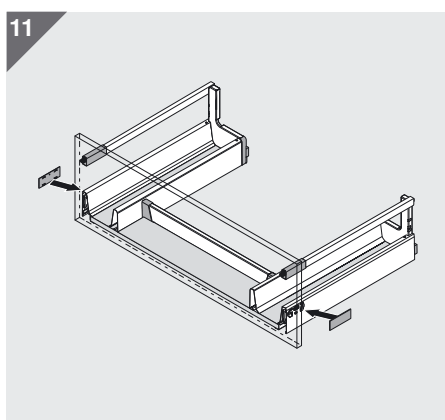
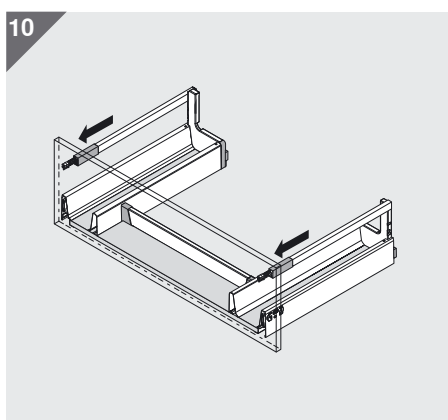
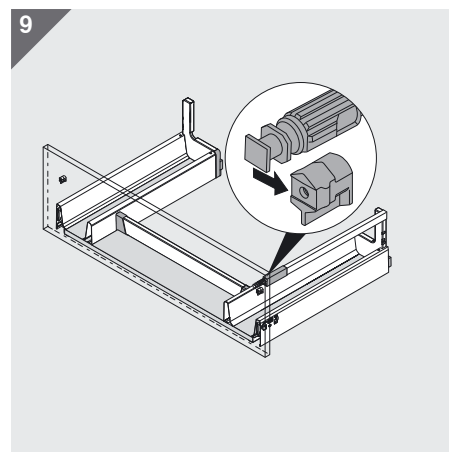
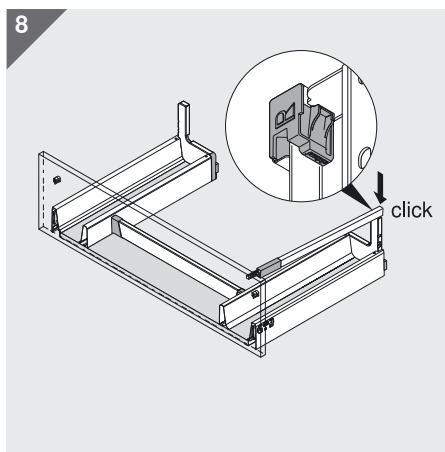
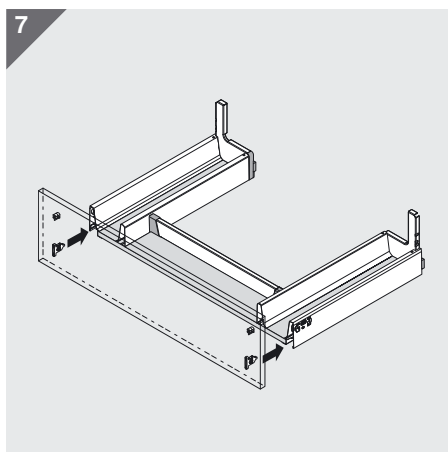


5

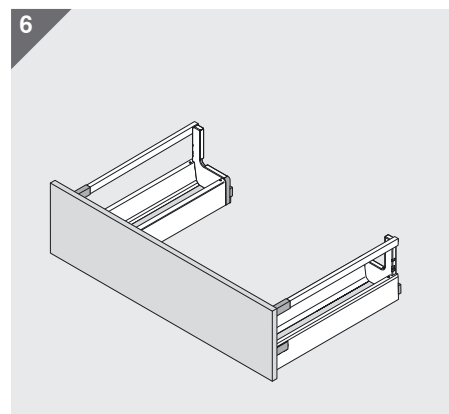
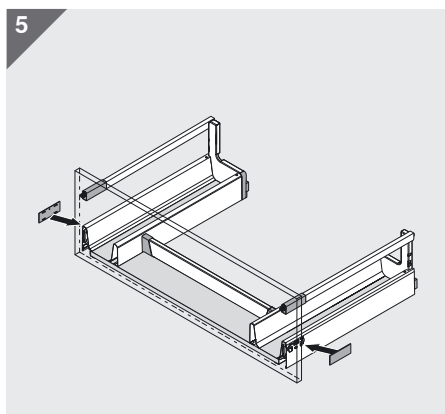
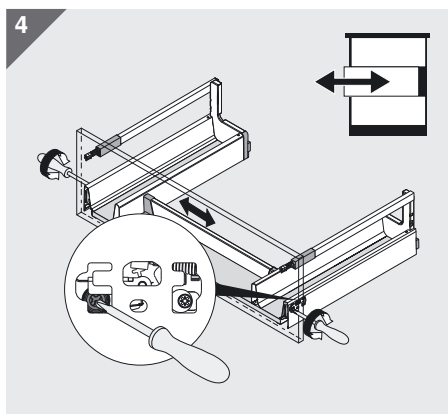
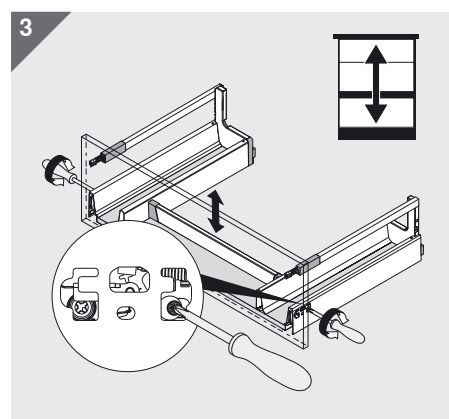
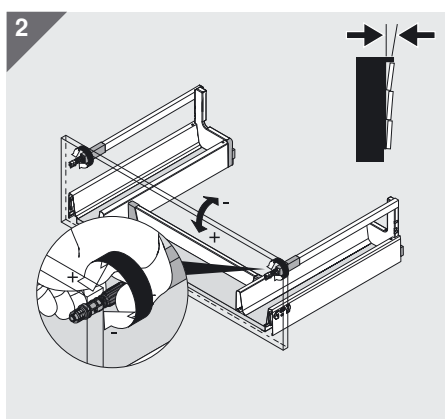
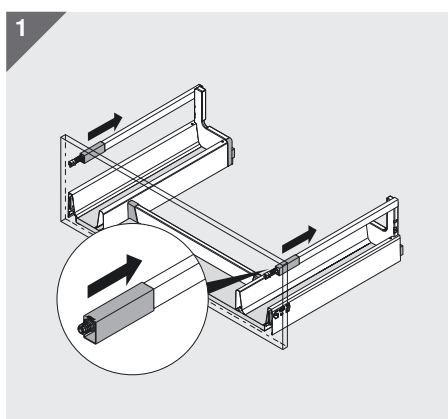


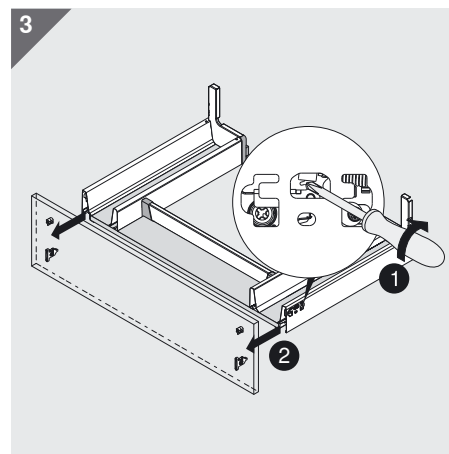
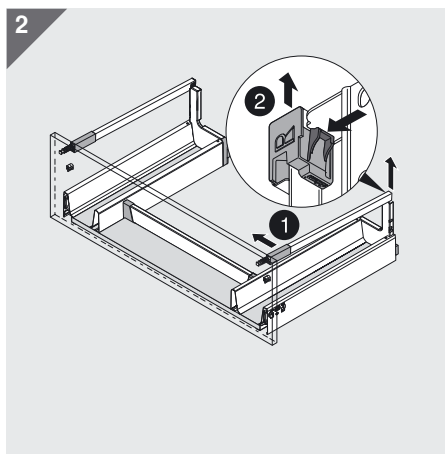
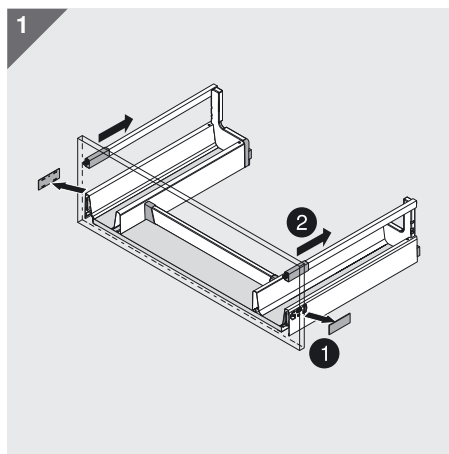
6





Verstellung | Adjustment | Ajuste





Julius Blum GmbH
 Beschlägefabrik
 6973 Höchst, Austria
 Tel.: +43 5578 705-0
 Fax: +43 5578 705-44
 E-Mail: info@blum.com
www.blum.com